



Update manager ZLOAD

User Manual

Revision: 2.0

Document: UM_ZLOAD_20110711_001_02_00.doc

WARRANTY

The device supplied to the buyer and/or the recipient is guaranteed by CLEODE against any malfunctions originating from a design and/or manufacturing flaw, for a period of twelve (12) months following delivery. The buyer and/or recipient is (are) responsible for proving the existence of the said defects or flaws. This warranty is applicable in accordance with articles 1641 to 1648 of the French Civil Code and in compliance with the French statutory warranty. The warranty covers the replacement free of charge of devices and parts affected by a design and/or manufacturing flaw excluding conspicuous defects in the device that are covered by the buyer and/or the recipient.

In order to invoke the warranty, the buyer must immediately send written notice to CLEODE of the flaws that it attributes to the device. It must enable CLEODE to have access to the device to observe these defects and repair them. The warranty provided by CLEODE is strictly limited to the equipment provided and shall only have for effect the replacement or repair, at CLEODE's expense, on its own premises, of all devices or parts that are not functioning as a result of defects or flaws. CLEODE reserves the right to modify the devices in order to comply with the warranty.

The warranty does not apply to replacement or repairs that may result from normal wear and tear of devices, systems or products, damage or accidents resulting from negligence, failure to supervise or maintain, or incorrect use of the devices, systems and/or products.

The maintenance service is provided by CLEODE with all reasonable care possible and in compliance with the current state of the arts.

The exchange of parts or repairs performed under the warranty cannot result in extending the length of the warranty. In no event can the unavailability of the device due to servicing give rise to compensation for any reason whatsoever. The seller is released from all obligations relating to the warranty if the product or device has been modified without prior written consent, or if original parts have been replaced by parts which it has not manufactured without prior consent. If unforeseen damage is caused by the device, it is expressly agreed that the seller can only be liable for the reimbursement of monies received for the purchase of the device if it has been destroyed. Under no circumstances can the seller be held liable for indirect or contingent damage. The seller is released from any liability and the buyer waives any rights against it if an accident or direct or indirect damage is caused to the buyer following a defect, incorrect usage, incorrect maintenance or normal wear of the device sold.

TABLE OF CONTENT

WARRANTY	2
I INTRODUCTION	6
I.1 MANAGER UPDATE PRESENTATION	6
I.2 COPYRIGHT	6
II INSTALLATION	7
III USE	11
III.1 SCAN OBJECTS	11
III.2 SELECTING OF OBJECTS TO UPDATE	12
III.3 SELECTING FILE	12
III.4 REMOVE NETWORK SETTINGS	12
III.5 START UPDATE	13
III.6 END UPDATE	13
REPAIR AND MAINTENANCE	14

LIST OF FIGURES

Figure 1 : Interface presentation	6
Figure 2 : Choose language of the installation.....	7
Figure 3 : Welcome to the setup wizard	7
Figure 4 : Select destination location	8
Figure 5 : Select start menu folder	8
Figure 6 : Add a desktop icon	9
Figure 7 : Check of the information	9
Figure 8 : Completing setup wizard	10
Figure 9 : Scan network.....	11
Figure 10 : Symbol of objects Zigbee	11
Figure 11 : Symbol of objects in programming mode.....	12
Figure 12 : Selecting objects to update.....	12
Figure 13 : Selecting file.....	12
Figure 14 : Remove network settings.....	12
Figure 15 : Current update	13
Figure 16 : Update finish with success.....	13
Figure 17 : Update failed	13

TABLE OF REVISIONS

Version	Authors(s)	Version description	Date
0.1	CLEODE	Initial version	11/07/2011
1.0	CLEODE	Validation	31/08/2011
1.1	CLEODE	Modifications of screens for the management of the coordinator	05/04/2012
2.0	CLEODE	Validation	05/04/2012

I INTRODUCTION

I.1 MANAGER UPDATE PRESENTATION

The manager of update ZLOAD can update the ZigBee™ objects of the company CLEODE from a USB doongle.

The interface ZLOAD appears in the form:

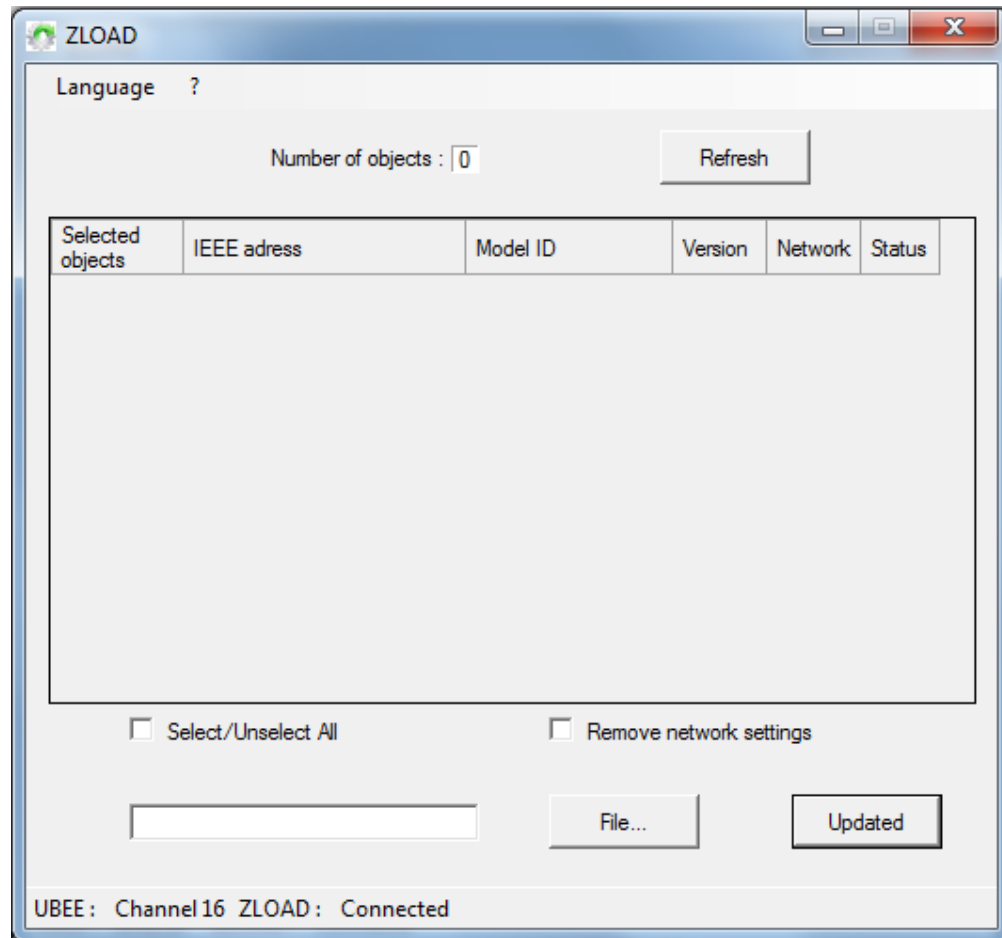


Figure 1 : Interface presentation

I.2 COPYRIGHT

The CLEODE trademark and the CLEODE logo are properties of CLEODE SA, France. This document also refers to trademarks and other product names that are registered trademarks of their respective owners.

Copyright © 2009 CLEODE SA. All rights reserved.

II INSTALLATION

Launch the application *Setup_ZLoad.exe*.

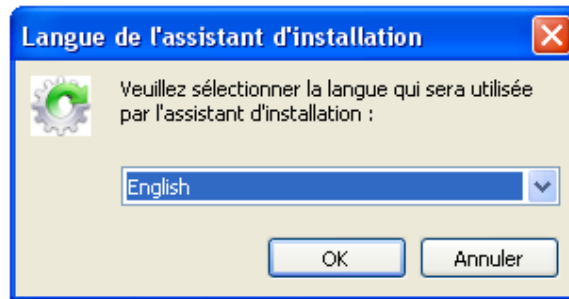


Figure 2 : Choose language of the installation

Choose the language of installation and click on *OK*.



Figure 3 : Welcome to the setup wizard

Click on *Next*.

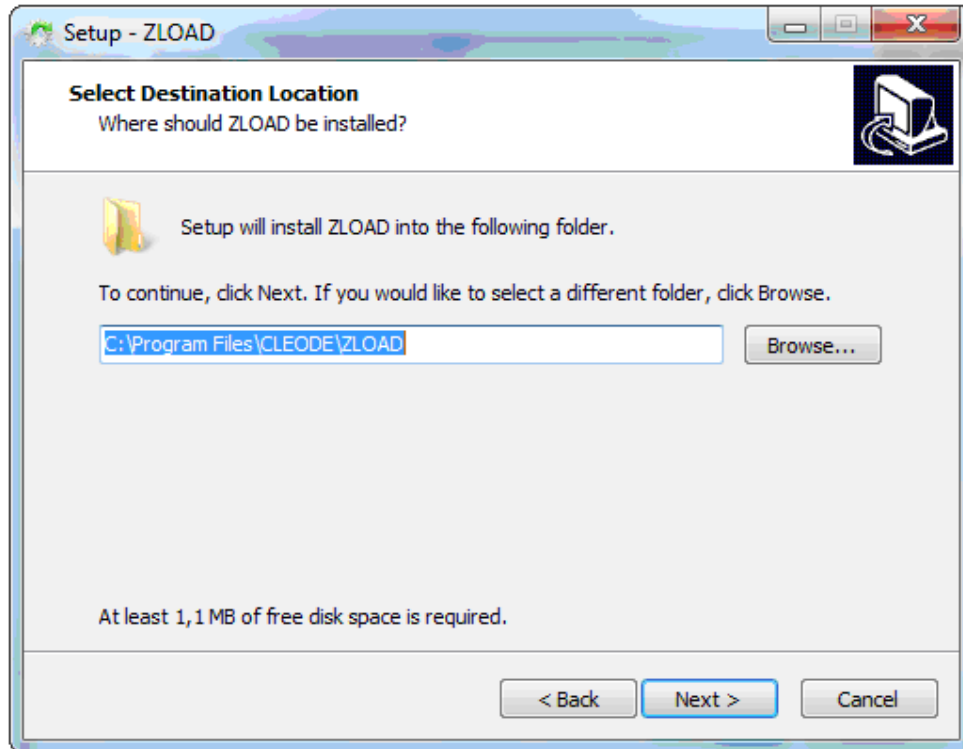


Figure 4 : Select destination location

Select the destination location and click on *Next*.

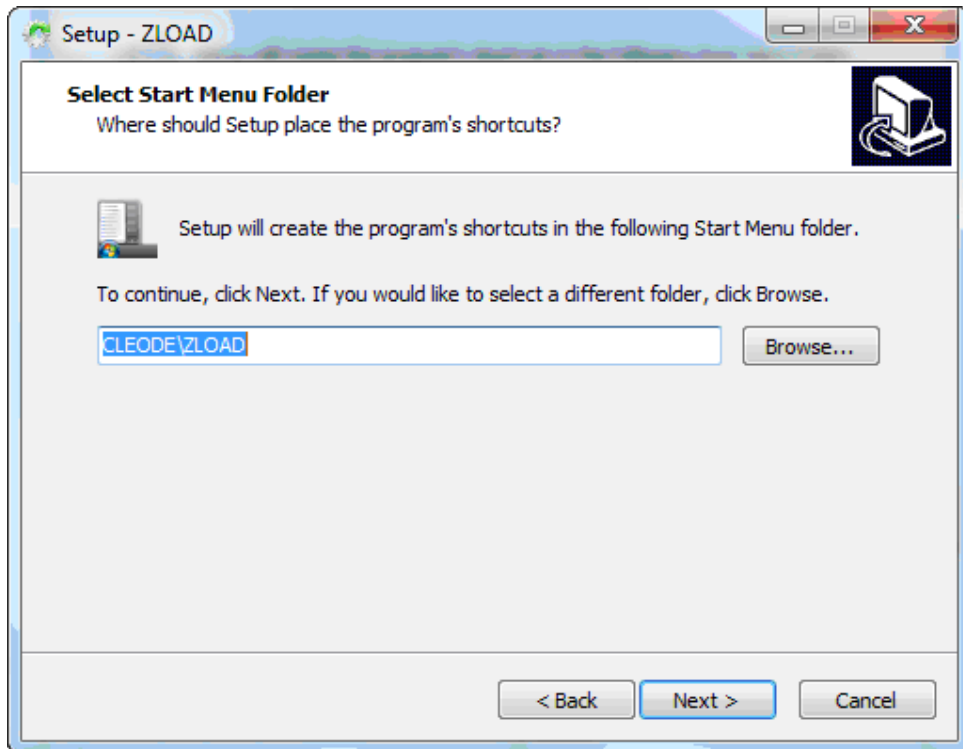


Figure 5 : Select start menu folder

Select the start menu folder and click on *Next*.

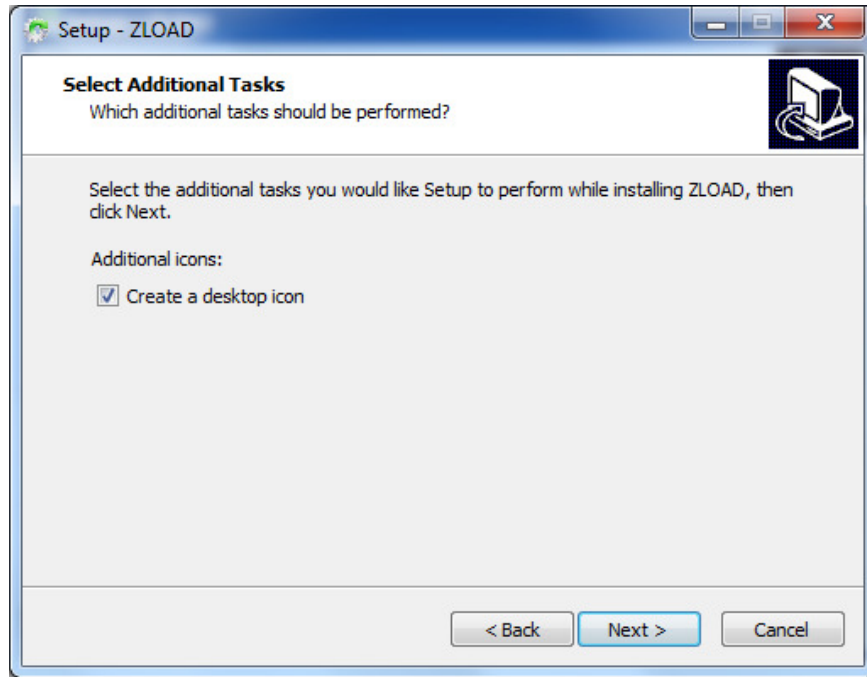


Figure 6 : Add a desktop icon

Click on the box to add a desktop icon. Click on *Next*.

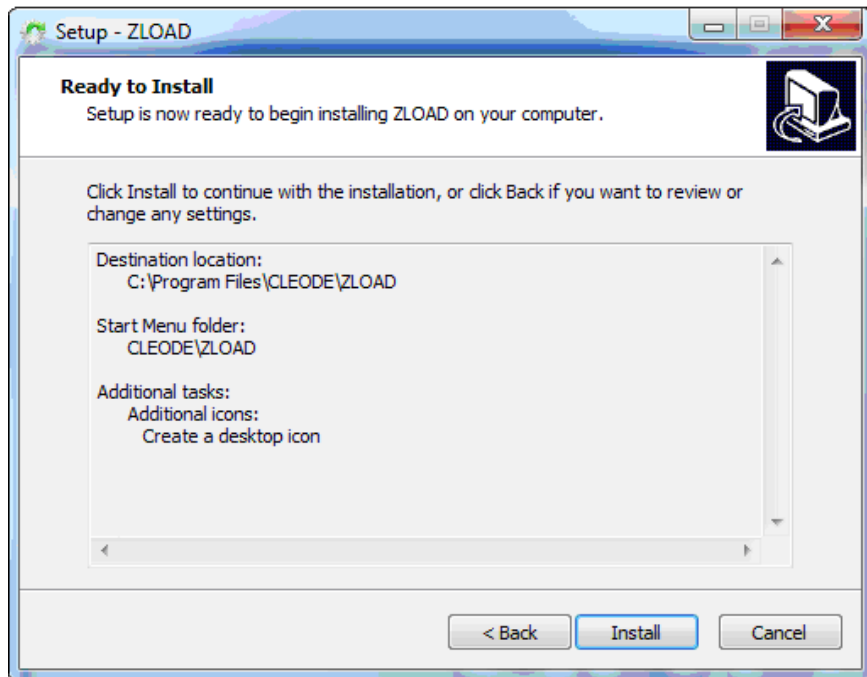


Figure 7 : Check of the information

Check the information and click to *Install* if everything is correct otherwise to click the *Back*.

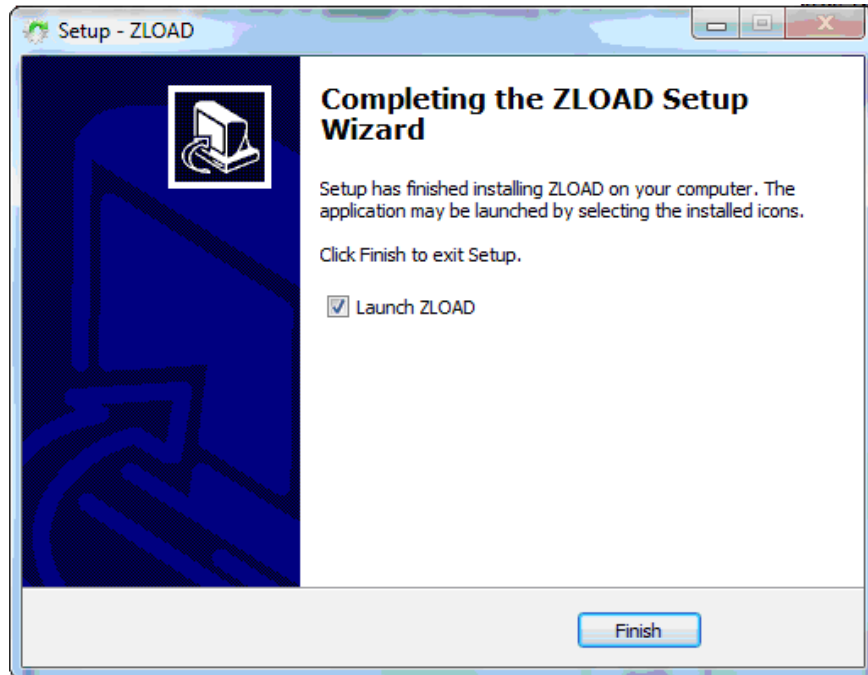


Figure 8 : Completing setup wizard

The installation is ended. You can choose to execute ZLOAD by clicking the box. Click to ***Finish***.

III USE

III.1 SCAN OBJECTS

Connect the UBEE and the ZLOAD on your computer then start the ZLOAD application. If you don't possess UBEE, objects to be updated must be put in programming mode before passing in the following stage.

Once the ZLOAD application started, you have to obtain a window similar to that below.

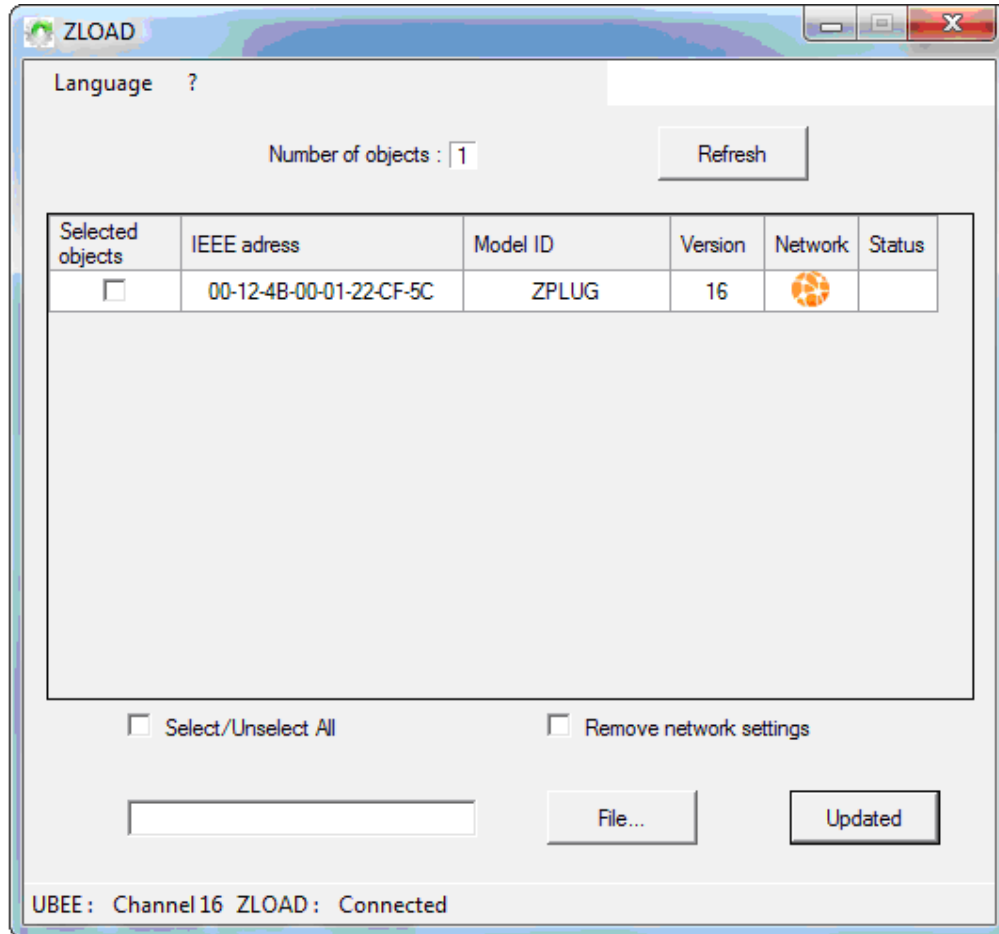


Figure 9 : Scan network

All the present objects in your network as well as those in programming mode will have appeared in the previous window.

The present objects in the network ZigBee™ are symbolized by the icon below.



Figure 10 : Symbol of objects Zigbee

Objects in programming mode are symbolized by the icon below.



Figure 11 : Symbol of objects in programming mode

If one of your objects is not in the list, it's possible it's either out of reach of ZLOAD. In that case, move the ZLOAD closer to the object then click *Refresh*.

III.2 SELECTING OF OBJECTS TO UPDATE

To select the object you want to update, click on the box next to the address of the object. Once the object has been selected, the box is checked.


Selected objects	IEEE address	Model ID	Version	Network	Status
<input checked="" type="checkbox"/>	00-12-4B-00-01-22-CF-5C	ZPLUG	16		

Figure 12 : Selecting objects to update

If you want to update multiple identical items you need tick every box.

Make sure to select only the objects with the same name. If you select objects with different names, the update of the latter will not happen.

III.3 SELECTING FILE

Select the file corresponding to the object to update by clicking on the button *File...*



Figure 13 : Selecting file

Warning, the selected file must absolutely match the object to be updated. If this is not the case, the update will not take place.

III.4 REMOVE NETWORK SETTINGS

If you want to delete the network settings of your object so that it joins a new network, select *Remove network settings*.

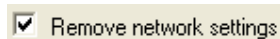


Figure 14 : Remove network settings

III.5 START UPDATE

When you finish configuring the update you can click the button *Updated*.

At this moment the transfer of the file begins. The Network icon and the Status icon have to change to look like those below.



Selected objects	IEEE adress	Model ID	Version	Network	Status
<input checked="" type="checkbox"/>	00-12-4B-00-01-22-CF-5C	ZPLUG	16		

Figure 15 : Current update

If the Network icon isn't identical to that present above, the object which you wish to update doesn't answer any more. It's possible that the object whether out of reach the ZLOAD. In that case, move the ZLOAD closer to the object, click *Refresh* and begin again the configuration from the stage III.2.

III.6 END UPDATE

At the end of the transfer status is displayed in the right column. The update takes about 1 minute for an object.

If a green mark appears, the update has completed successfully and the object restarts in order to join a network.



Figure 16 : Update finish with success

If a red mark appears, the update failed. The object remains in programming mode until a program completes successfully. To do this, repeat the procedure for updating from the beginning.



Figure 17 : Update failed

REPAIR AND MAINTENANCE

Defective equipments shall be first reported to the CLEODE support team in order to be assigned an RMA number. Be prepared to state your name, company and the serial number of the defective item to the support personnel.

The item shall then be returned to CLEODE with the following documents:

- The RMA number
- A copy of the delivery slip
- A detailed description of the default and the test context

The maintenance period is typically four (4) weeks starting from the date of reception of the equipment at the CLEODE headquarters.



CLEODE S.A.
Technical Support Division

8, rue Bourseul
22300 Lannion
France

Phone : +33 (0) 2 96 48 68 18

Fax : +33 (0) 2 96 48 19 11

E-mail : support@cleode.com

Web : <http://www.cleode.com>