

ZDB

Evaluation board Zigbee™

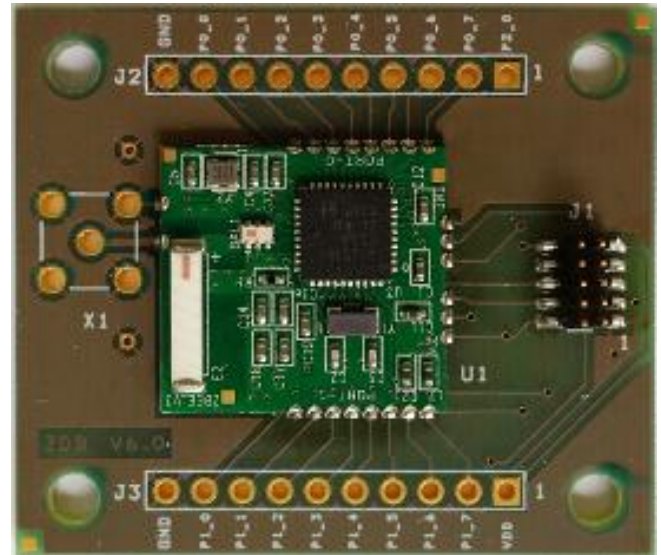
The ZigBee™ evaluation board allows implementing fast applications using ZigBee™ technology.

On a small form factor, the evaluation board gives direct accesses to the inputs/outputs of the programmable component CC2530 of Texas Instrument, a PCB antenna and an interface for the addition of a UFL antenna.

The ZigBee™ evaluation board is designed for developers having knowledge in C language and in electronic design.

Package contents

ZDB	✓
User Manual	✓



Caractéristiques Spécifications

- Serial link up 115200 bauds
- RF link 250 kbps
- Frequency 2394 – 2507 MHz
- Portée 100 m à 0 dbm
- PCB
- I/O CC2530
- JTAG CC2530

Conformity



Meets European consumer safety, health and environmental requirements



Meets the Home Automation Public Profile standard established by Zigbee alliance



CLEODE
8 rue Bourseul
FR-22300 LANNION

Tel : +33 (0)2 96 48 68 18
Fax : +33 (0)2 96 48 19 11
www.cleode.com
info@cleode.fr



Données techniques

Measurement	37 x 43 mm
Power Supply	3V Continu